

A Guide to VEGA

A Channel Editor for Topfield's Satellite Receivers

TOPFIELD

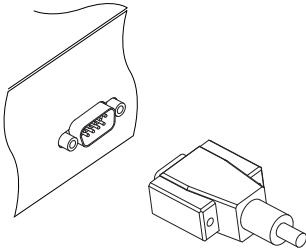
Editing channel data on your computer

You can edit the channel data on your computer by using a channel editor program, *Vega*. With *Vega* you can do the followings:

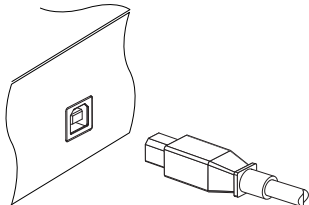
- Adding, deleting or modifying satellite entries
- Adding, deleting or modifying transponder entries
- Deleting or modifying service entries
- Adding, deleting or modifying favorite groups

You can not only transfer your channel data to the digital receiver but also save it as a file, the extension name of which is *std*. *Vega* is available from the Topfield web site, <http://www.i-topfield.com>.

To use *Vega*, you have to prepare either a USB cable or a RS-232 cable to link the digital receiver with your computer.



If you have a RS-232 cable (9 pin D-sub cable), plug one end of the cable into the RS-232 port on the digital receiver, and the other end into the matching port on your computer.



If you have a USB cable, plug one end of the cable into the **USB** port on the digital receiver, and the other end into the matching port on your computer.

Turn off the digital receiver if it is on, and then Run *Vega*. To import the channel data from the digital receiver, perform the following steps:

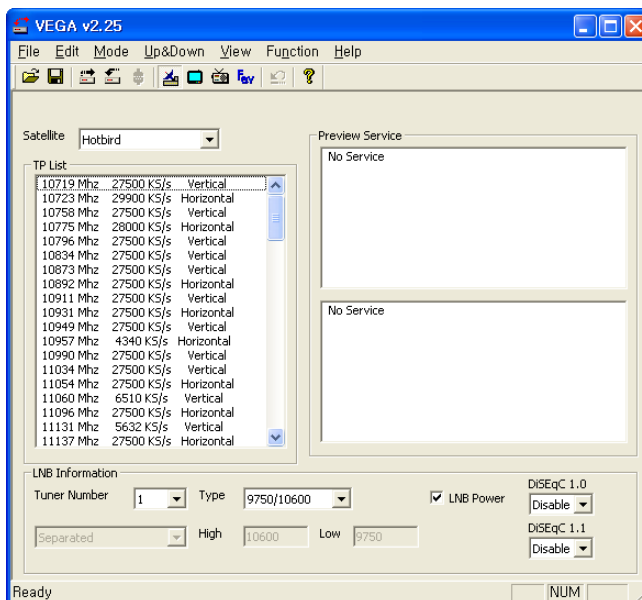
1. If you have connected with a USB cable, select the **Mode > USB** menu; otherwise if you have done with a RS-232 cable, select the **Mode > Serial** menu.
2. Select the **Up & Down > Upload from STB** menu.
3. A box appears asking for your confirmation. Press the **Upload** button on it.
4. Turn on the digital receiver. Data transfer will start as soon as it is turned on.

Of course, you can open a *std* file instead of importing the channel data from the digital receiver if you have ones. If you have finished your work, you have to perform the following steps to export the channel data to the digital receiver.

1. Select the **Up & Down > Download to STB** menu.
2. A box appears asking for your confirmation. Press the **Download** button on it.
3. Turn on the digital receiver. Data transfer will start as soon as it is turned on.

Editing satellite and transponder list

To edit the satellite list, you have to press the F1 key on your keyboard in the first place. Then related menus will become enabled.



To add a satellite entry, select the **Function > Satellite, TP > Add Satellite** menu, then a box appears. You should enter a new satellite name into the **Satellite Name** blank. If you know the position index of the new satellite for DiSEqC 1.2, enter the value into the **Position Index** blank. If you do not, you have to perform the **Motorized DiSEqC 1.2** menu of the digital receiver. After making a new satellite entry by pressing the **OK** button on the box, you should configure LNB settings for the new one.

To delete a satellite entry, choose your desired satellite entry at the **Satellite** drop-down list box, and then select the **Function > Satellite, TP > Delete Satellite** menu. When a box appears asking for your confirmation, the selected satellite entry will be deleted by pressing the **Yes** button on it.

To modify a satellite entry, choose your desired satellite entry at the **Satel-**

lite drop-down list box, and then select the **Function > Satellite, TP > Edit Satellite** menu. How to modify is the same as in adding a new satellite entry.

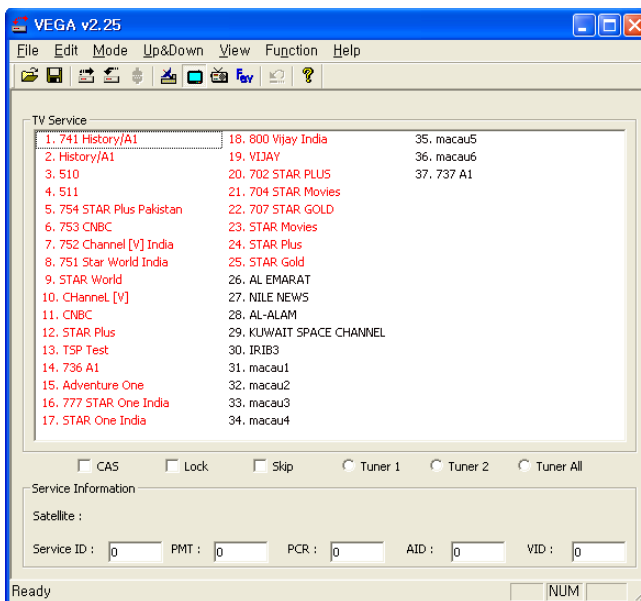
To add a transponder entry, select the **Function > Satellite, TP > Add Transponder** menu. Then a box appears, in which you should specify frequency, symbol rate, polarity and stream identification for your new transponder. Pressing the **OK** button will save a new transponder entry.

To delete a transponder entry, choose your desired transponder entry at the **TP List** list box, and then select the **Function > Satellite, TP > Delete Transponder** menu. When a box appears asking for your confirmation, the selected transponder entry will be deleted by pressing the **Yes** button on it.

To modify a transponder entry, choose your desired transponder entry at the **TP List** list box, and then select the **Function > Satellite, TP > Edit Transponder** menu. How to modify is the same as in adding a new transponder entry.

Editing television and radio service list

To edit the television service list, you have to press the **F2** key on your keyboard in the first place. Then related menus will become enabled.



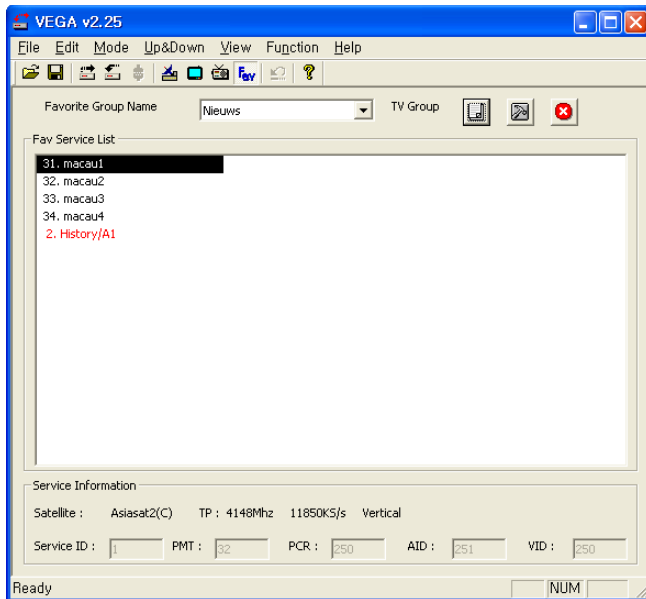
To delete a service entry, choose your desired service entry at the TV Service list, and press the **Delete** key on your keyboard. When a confirmation dialog box appears, the selected service entry will be deleted by pressing the **Yes** button on it.

Checking the **CAS** check box designates a selected service entry as a pay service. If there is a service that you want to prevent your children from watching, select it and check the **Lock** check box.

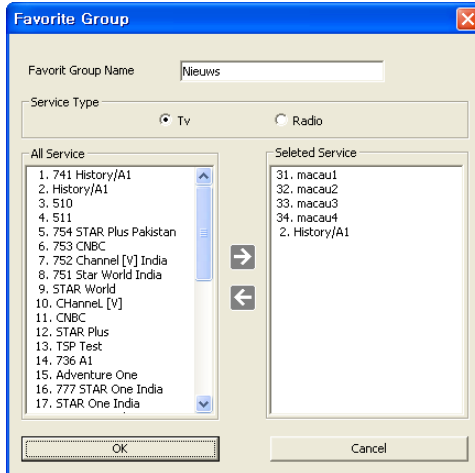
To edit the radio service list, you have to press the **F3** key on your keyboard in the first place. How to edit is the same as in editing the television service list.

Editing favorite list

To edit the favorite list, you have to press the **F4** key on your keyboard in the first place. Then related menus will become enabled.



To delete a favorite group, choose your desired favorite group at the Favorite Group Name drop-down list box, and then select the Function > Fav Group > Delete Current Fav Group menu. When a confirmation dialog box appears, the selected favorite group will be deleted by pressing the Yes button on it.



To add a favorite group, select the **Function > Fav Group > Add New Fav Group** menu. Then you will see a dialog box like the left figure. Enter your desired name into the **Favorite Group Name** text box to name a new group. If you make a radio favorite group, select the **Radio** option button.

To add services to the new group, choose your desired services at the **All Service** list box on the left-hand of the screen, and then press the right arrow button (→) on the center of the screen. Then the selected services will be added into the new group. To remove a service entry from the group, press the left arrow button (←) after choosing one. Pressing the **OK** button will create your new favorite group.

To modify a favorite group, select the **Function > Fav Group > Edit Current Fav Group** menu. How to modify is the same as in adding a favorite group.